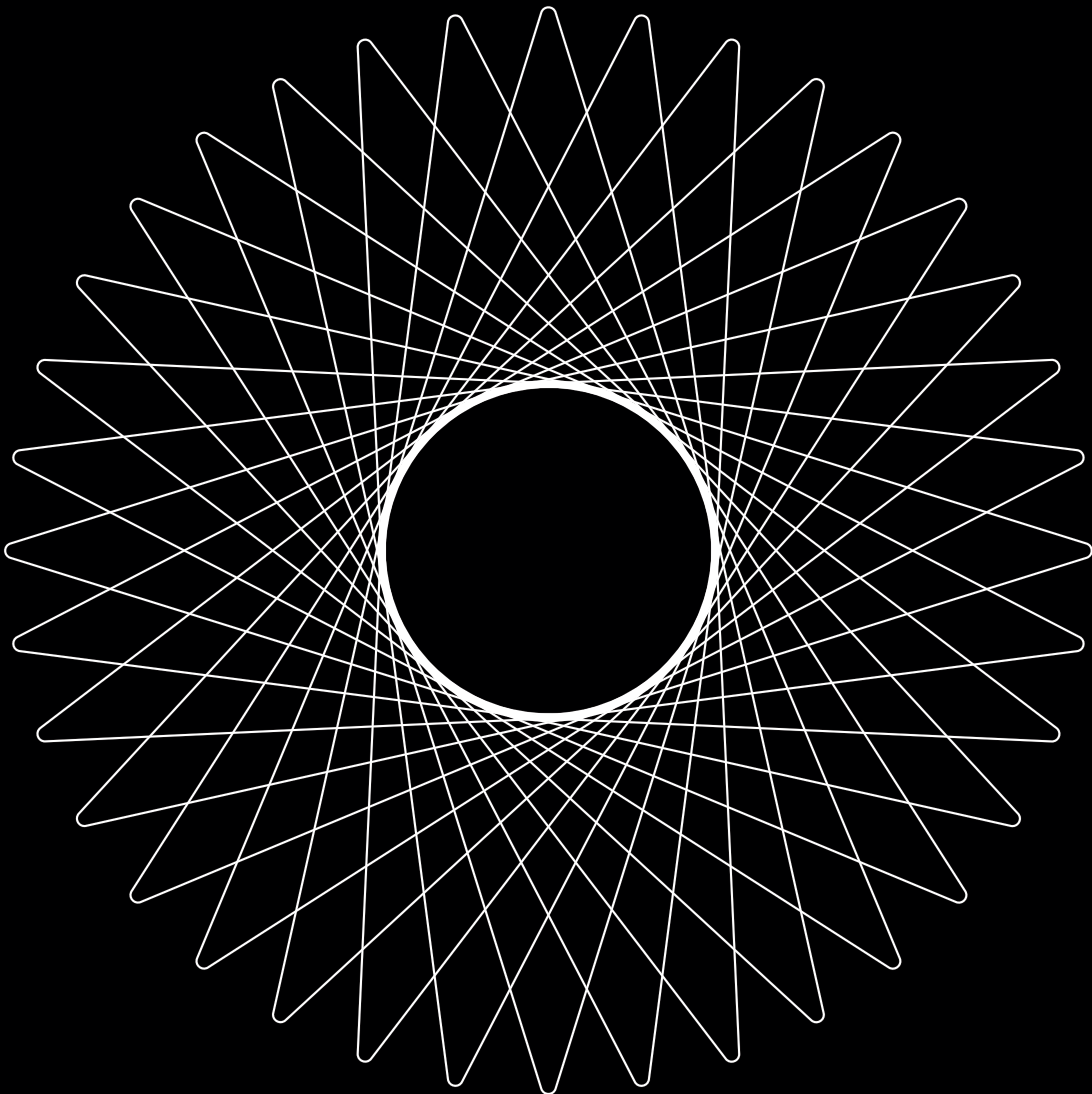


CERARL

a glimpse of infinity unbound by time



the promise of the everlast



Lightness, strength, and beauty that everlasts –
experience the distinction of **CERARL**.

ADMIRA invites you to discover the carefully curated 2020 **CERARL** collection. Caress each panel. Feel the subtle allure of every texture and finish. Gaze upon a rare and enigmatic beauty that withstands the flame and tides of time. **CERARL** is fire retardant and water resistant – its elegant aesthetics remain constant and ever new.

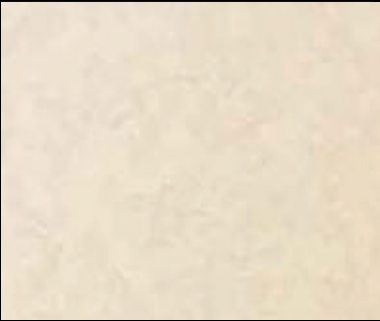
Easy to install, incredibly lightweight yet solid and durable, the strength of **CERARL** lies within its melamine resin-impregnated layers with a non-combustible core. From exquisite wood grains to sleek marble, transform your spaces into mesmerising masterpieces that endure the test of time.

Ever strong. Ever beautiful. Everlast.

CERARL, the promise of the EVERLAST.



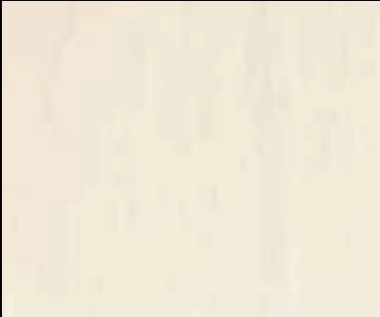
FCA 1827
BRECCIA SILK



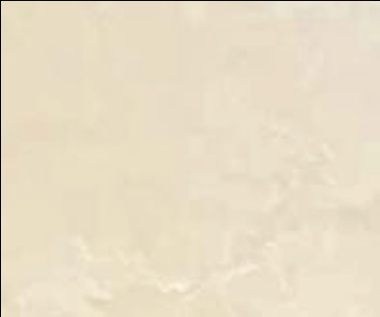
ACA 2108
WHITE CALCITE



FCS 1812
ORIENTAL MARBLE



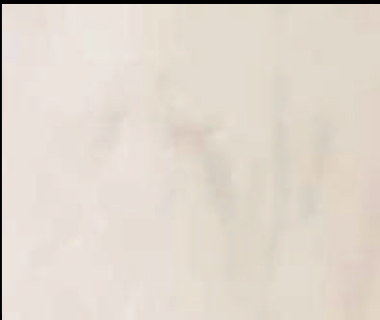
ACS 1758
VENICE TRAVERTINO



ACS 1921
BOTTICINO BEIGE



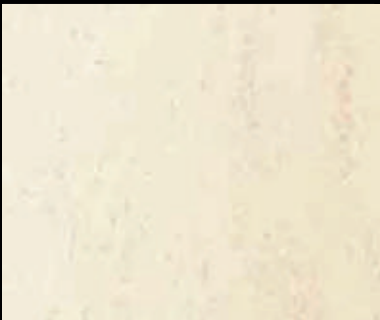
ACS 2071
TRAVERTINO



ACS 1913
CORONA MARBLE



FCS 1891
BOTTICINO FROST



ACS 2899
KILIMANJARO



NEW



FCS 1150
CRATER GREY



FCS 1151
CRATER DARK GREY



NEW



ACS 1147
CONCRETE



ACS 1403
EMPERADOR MARBLE



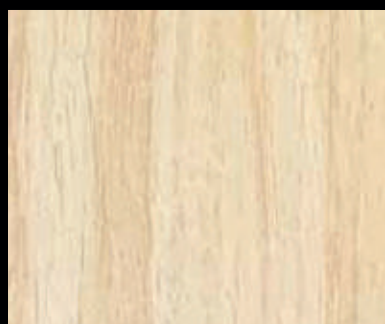
ACA 2042
BLACK GLACIER



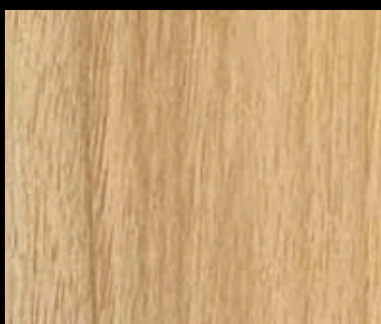


OFFICE LOBBY

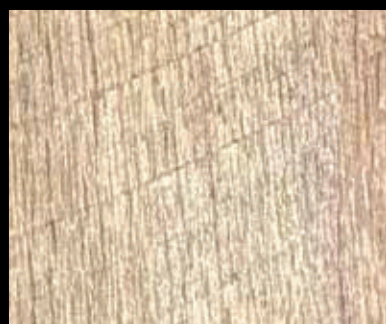
ACA 2042
BLACK GLACIER



FCW 1763
SOL CHESTNUT



FCW 1711
TORINO WALNUT



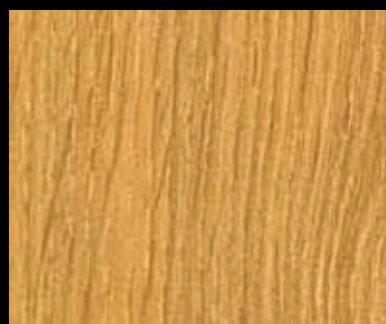
FCW 1654
MANASLU OAK



FCW 1788
PHRYGIAN ASH



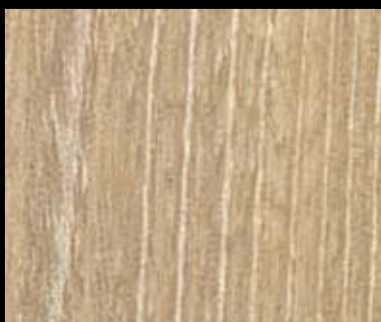
FCW 1793
ALABASTER OAK



FCW 1794
OGON OAK



FCW 1133
WOOD ASPEN



FCW 1648
LAURA ELM



FCW 1520
FIELD OAK





FCW 3559
KYOTO NITE



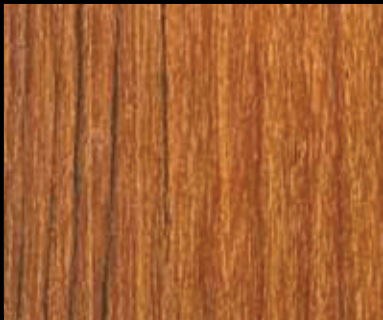
FCW 2165
GABON EBONY



FCW 1538
RUSTIC PINE



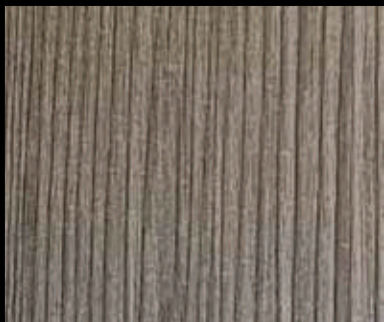
FCW 1816
ZEBRANO



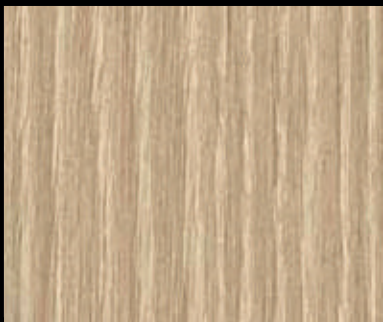
FCW 1669
DARK MAHOGANY



FCW 3112
SMOOTH ASH



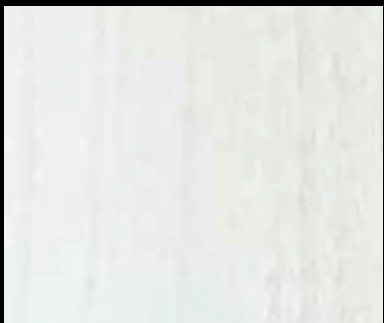
FCW 1708
BLAST CEDAR (DARK)



FCW 1572
PAINTED OAK (GREY)



FCW 1806
PAINTED OAK



FCW 2171
WHITE WALNUT



LEGEND

NEW

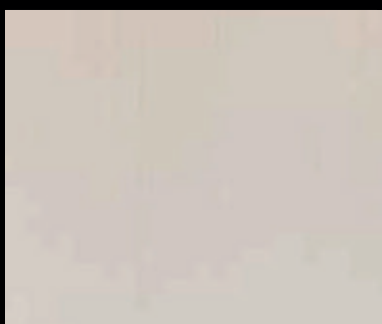
GREEN LABEL

FINGERPRINT RESISTANT

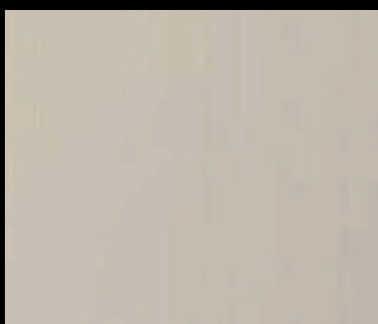


DENTAL ROOM

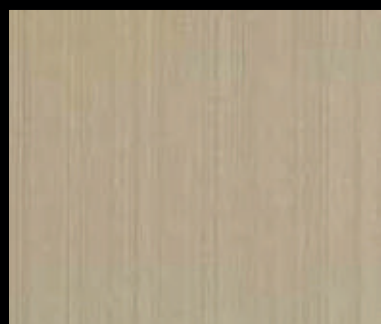
ACA 1949
STRIPE WHITE



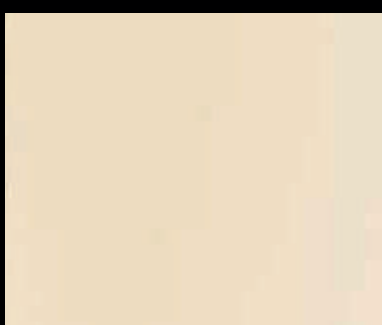
ACA 1949
STRIPE WHITE



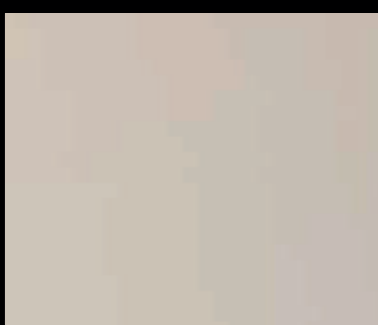
ACA 1950
STRIPE GREY



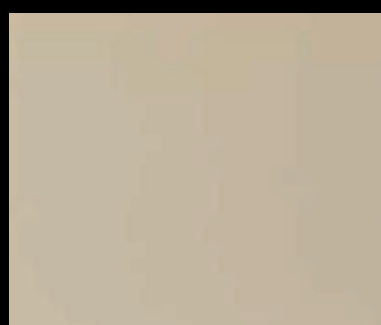
ACA 1951
STRIPE BEIGE



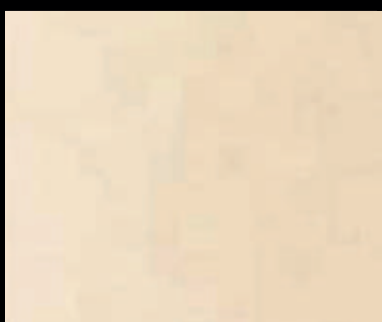
ACP 5417
WHITE



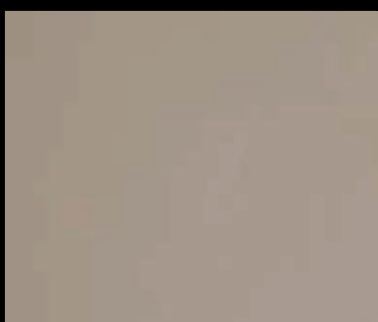
ACP 852
PEARLY GRANITE



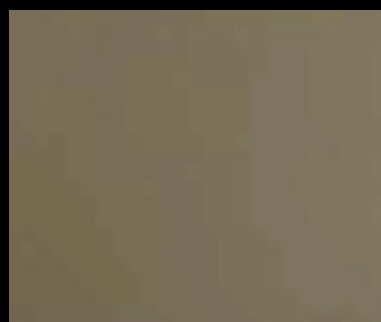
FCP 6230
PEARLY SAND



ACA 1917
LUMINAIRE



ACP 6228
BRUSHED METAL



ACP 5505
VIBRATION



CERARL transforms spaces into stunning masterpieces that endure the test of time.

CERARL produces a sleek seamless finish to walls and kitchen backers similar to glass and stainless steel.

- fire rating class '0'
- water resistant
- heat resistant
- stain resistant
- quick & easy installation

CERARL PANEL SIZE

3 FT x 8 FT (935mm x 2455mm \pm 2mm)

JOINER SIZE

10 FT (3075mm)

For **CERARL** price list, please contact our sales representative or email us at marketing@admira.sg for more information.

Please scan QR code for **CERARL** technical data specification, installation and maintenance information.

CERARL is a registered trademark of AICA KOGYO CO.,LTD



LOUNGE

FCS 1150
CRATER GREY



Singapore (Headquarters)

Admira Pte Ltd
45, Sungei Kadut Avenue
Singapore 729668
T : +65 6368 0123
F : +65 6362 9600
marketing@admira.sg
www.admira.sg

Malaysia

Admira Laminates Sdn Bhd
11, Jalan PJS 7/21
Bandar Sunway
46150 Petaling Jaya, Selangor
T : +603 5624 1180
F : +603 5624 1097
marketing@admira.my
www.admira.my

Disclaimer & Warranty

Clients are advised to reconfirm the selected designs, corresponding colour codes and material attributes with ADMIRA's representatives prior to ordering. ADMIRA will not be responsible for any claims resulting in errors in this catalogue, or from the sample selection process. ADMIRA ensures that its surface products are reasonably free of defects upon delivery with compliance to its strict material properties and quality controls. Customers are advised to examine the CERARL quality before installation for any noticeable manufacturing defects. Should there be any inherent defects not due to mishandling or improper installation, ADMIRA's liability will be limited to the replacement of products only. Colours and patterns of the panels in this catalogue and on our digital platforms may vary from actual CERARL pieces.

Manufactured by

AICA